

**12
Mar
2025**

.....
London

**Ensure your school is
inclusive for all students
with SEND and provide
high-quality teaching and
pastoral support.**

SEND Update

EXPERT SPEAKERS INCLUDE:

Georgina Durrant

SEN Consultant, Author,
Former SENCO and Podcast Host

Hannah Hamid

Senior Inclusion Adviser,
BDSIP

Abigail Hawkins

Founder,
SENSible SENCO CIC

Sarah Johnson

Education Consultant and Founder,
Phoenix Education Consultancy

Refresh

Update your high-quality
teaching practices to ensure
inclusive teaching for all.

Engage

Manage parental and external
agency relationships to create a
joined-up approach.

Leadership

Lead SEND across your setting
with insights on law and
managing support staff.



Why attend this conference?

With the new government looking likely to prioritise SEND and inclusion within education, ensure you too prioritise your development of inclusive teaching and leadership, providing improved support for all learners with additional need.

SEND Update is a fantastic opportunity to hear SEND and inclusion professionals share expert advice on leading a whole-school culture of inclusivity, with high-quality teaching for all and strong pastoral systems to support social, emotional and academic goals. Network and collaborate with fellow SEND and inclusion professionals within dedicated facilitated discussion, to share best practice and expand your networks.

Design your day to suit your needs, with a choice of 12 workshops and leave confident and encouraged about your next steps in leading inclusive practice.



The Benefits

Support

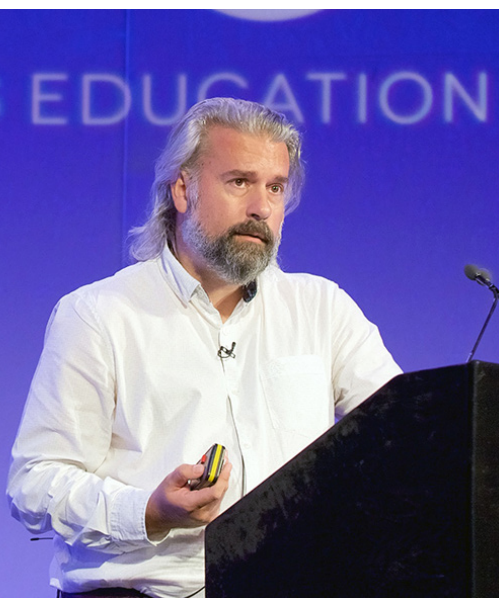
Strengthen your high-quality inclusive teaching methods, to support every child.

Connect

Widen your network, sharing best practice and examples with colleagues.

Develop

Increase your skillset in supporting students with SEMH and complex needs.





Keynotes

→ Find your tribe

Connect with colleagues from similar settings as you and benefit from facilitated discussions surrounding your ambitions for SEND support.

→ Emotionally Based School Avoidance

Increase your understanding of EBSA and gain techniques to support students and remove barriers to learning.

→ Complex needs

Support students with complex needs within an inclusive environment that offers equal opportunity for students to develop and succeed.

→ Utilise your support staff

Maximise how you utilise the unique relationship support staff have with students, supporting high-quality teaching and pastoral support.



Breakout Sessions

High-quality teaching for all

Develop your high-quality teaching methods, so you can meet the needs of all students in class.

Effective working with your local authority

Reflect on your current working relationship with your LA and find strategies to improve a collaborative approach.

Early support before diagnosis

Consider different approaches you can utilise to support students with additional needs before formal diagnosis.

Working with parents

Strengthen your relationships with the parental community and ensure aligned support through clear communication.

Meet sensory needs

Adapt and improve how you support sensory regulation for students to benefit behaviour, engagement and morale.

Universal design for learning

Discover the UDL approach to learning and how it gives all students equal opportunity to succeed.

SEMH support

Ensure that you can offer high-quality evidence-based support to all learners with SEMH needs.

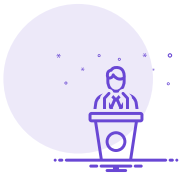
SEND Law

Increase your knowledge of the laws that apply to your role, enabling greater confidence when managing EHCPs.

Whole-school culture

Lead a whole school culture that is supportive, inclusive and allows all staff and students to thrive.

TO SEE FULL PROGRAMME VISIT
oego.co/SEND-Update-2025



Speakers



Georgina Durrant (Chair)

SEN Resources Blog,
SEN consultant, author, former SENCO
and podcast host



Hugh Clench

OnLineTraining Ltd,
Director of strategy and content



Sonal Desai

Croydon Council,
Area SEND lead



Dr Ahmar Ferguson

Educational psychologist



Hannah Hamid

UCL Institute of Education,
Inclusion specialist and PhD
candidate



Abigail Hawkins

SENsible SENCO CIC,
Founder



Sarah Johnson

Phoenix Education Consultancy,
Education consultant and founder



Victoria Nunn

The Inclusive Learning Partnership,
SEND consultant, former SENCO



Simon Tanner

E-ACT,
National director of SEND



BOOK TODAY

oego.co/SEND-Update-2025



'Interesting and engaging speakers offering some 'easy to implement' practical ideas to take back to school.'

SENCO,
Beam County Primary

'The quality of the speakers and facilities were excellent. I feel empowered by today.'

SENCO,
Dolphin School

SEND Update

12 March 2025, 15Hatfields, London

PRICING

Your ticket includes copies of presentation slides from every speaker's session, refreshments and opportunities to network with other school leaders, practical, topical strategies to impact your school and a choice of workshops to tailor your day.

	Early bird pricing - First 50 places	Pricing
Schools	£159 + VAT	£199 + VAT
Elite and Unlimited Members	Included in your membership fee	

Not sure what you should pay?

Please contact us on 01823 792829 or contact conference.bookings@optimus-education.com