

# Nov 2024

DIGITAL CONFERENCE

WEDNESDAY 13 NOVEMBER 09:30 - 12:30 GMT

WEDNESDAY 20 NOVEMBER 09:30 - 12:30 GMT

**Strengthen your inclusive teaching and leadership to support students with SEND to thrive.**

# Leading Inclusive Learning

## EXPERT SPEAKERS INCLUDE:

**Louise Dawson**

Education Consultant and Inclusion Specialist

**Abigail Hawkins**

Founder, SENSible SENCO CIC

**Sarah Johnson**

Education Consultant and Founder, Phoenix Education Consultancy

**Dr Kirstie Rees**

Child and Educational Psychologist

## Inclusive Teaching

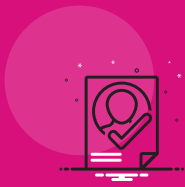
Ensure high-quality inclusive teaching and pastoral support.

## Wellbeing

Manage your workload, avoid burnout and build capacity for effective support.

## Attendance

Strengthen pastoral support for students with EBSA and engage parents.



# Why attend this conference?

**Strengthen your inclusive teaching and leadership to support students with additional needs to thrive in your school.**

Join education professionals from around the globe at Leading Inclusive Learning, a two-module digital conference created to support you with your knowledge and teaching of students with special educational needs and disability.

Increase your knowledge on specific neurodivergent conditions and gain practical tools and suggestions for removing barriers to learning. Reflect and improve your collaboration with parents and families supporting a joined-up approach of support.

In addition to your attendance at the two morning modules, receive speaker slides and recordings of all sessions to share wider within your school.



## The Benefits

### SUPPORT

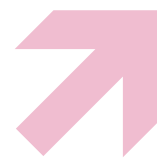
Strengthen your high-quality inclusive teaching methods to support every child.

### CONNECT

Widen your network, sharing best practice and examples with colleagues.

### DEVELOP

Increase your skillset in supporting students with SEMH and complex needs.





# Programme

## Module 1: 13 November 09:30-12:00 GMT chaired by Louise Dawson

### Early support for students without a diagnosis

Gain practical techniques to implement in class that support your early identification of needs whilst you wait for formal screening.

### Support complex needs

With increasing numbers of students with complex needs in mainstream education, ensure you can meet need and support development.

*Sarah Johnson, Education Consultant and Founder, Phoenix Education Consultancy*

### Autism Spectrum Condition

Increase your understanding of ASC, and how you can engage and connect with autistic students, ensuring inclusion and the opportunity to thrive.

*Angharad Welch, Speech and Language Therapist, Find the Key Speech and Language Therapy*

### Behaviour as communication

Manage classroom behaviour, ensuring students feel safe and able to focus on learning.

*Louise Dawson, Education Consultant and Inclusion Specialist*

## Module 2: 20 November 09:30 – 12:00 GMT chaired by Abigail Hawkins

### Effective working with parents and families

Enable a joined-up support system between school and home with effective communication at the heart of the relationship.

*Dr Kirstie Rees, Child and Educational Psychologist*

### Pathological Demand Avoidance

Increase your knowledge of PDA and gain strategies to improve your communication and support of students with PDA.

*Karen Ferguson, SEND Specialist and Founder, Linrow Education*

### Attendance

Understand reasons for absence and ensure you take action to remove barriers to attending, helping support students and families with a return to education.

### Manage your workload

Prioritise your workload, ensuring time and capacity to support students and staff.

*Abigail Hawkins, Founder, SENSible SENCO CIC*

To see full programme visit [oego.co/LeadingInclusiveLearning](https://oego.co/LeadingInclusiveLearning)

# BOOK TODAY

[oego.co/LeadingInclusiveLearning](https://oego.co/LeadingInclusiveLearning)



*'Thoroughly enjoyed being able to access CPD internationally and with the flexibility of watching a recording later'*

SEND LEADERSHIP  
DIGITAL 2024 DELEGATE

*'Great to know we are doing good things to support our most vulnerable learners. Great knowledge from the professionals.'*

SEND LEADERSHIP  
DIGITAL 2024 DELEGATE

## Leading Inclusive Learning

13 and 20 November, Digital

### PRICING

Your ticket includes recordings and copies of slides from every speaker's session and opportunity to network with inclusion professionals.

	Early bird pricing - First 50 places	Pricing
Schools	£149 + VAT	£199 + VAT
Elite and Unlimited Members	Included in your membership fee	

**Not sure what you should pay?**

Please contact us on 020 8315 1506 or contact [Jordan.Hickey@optimus-education.com](mailto:Jordan.Hickey@optimus-education.com)